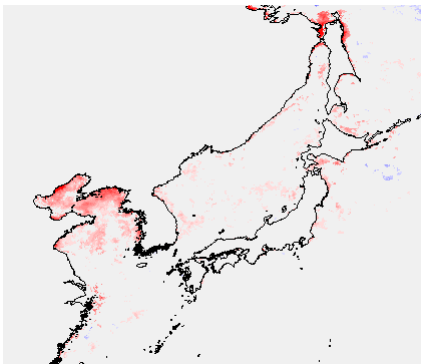


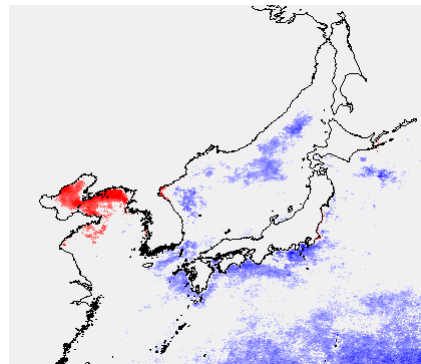
Assignments for hands on exercises

Genki Terauchi
NOWPAP CEARAC
Oct 12, 2011

Exercises from the course



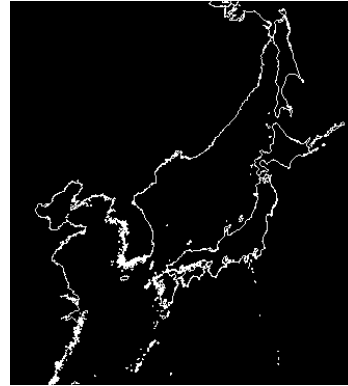
Changes in bloom magnitude of the Northwest Pacific detected by the Sen slope estimator.
(Jan 1997...Aug 2011)



Trends in surface Chl-a for the Northwest Pacific area during ~15 years
(Nov-1996...Aug-2011)

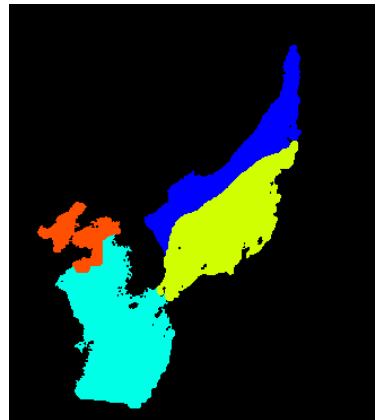
#1. Create image for your area of interest

- References
 - C:\Program Files\WimSoft\Course\3
 - Tutorial_time_series_of_areal_statistics.pdf
- Input
 - Projection: Linear
 - Pixel in size 9,000 meters
 - Input latitude and longitude
for your area of interest
 - Apply coastal line overlay
- Output
 - Save output as hdf file



#2. Create mask images for your area of interest

- References
 - C:\Program Files\WimSoft\Course\3
 - Tutorial_time_series_of_areal_statistics.pdf
- Input
 - Draw masks to be used for time series with Edit-Draw function
 - Replace coast line value 255 with 0 by Transf-Replace Values
- Output
 - Save output as hdf file



#3. Create time series chart

- References
 - C:\Program Files\WimSoft\Course3
 - Tutorial_time_series_of_areal_statistics.pdf
- Input
 - Remapped merged L3 Monthly Chl_9 images with WIM liner projection by wam_series (save the files in “cut” directory)
 - List of monthly Chl-a image under
C:\Sat\Merged\L3\Monthly\CHL_9
 - Your created mask image for time series
- Output
 - Run wam_stat for monthly timeseries and save output as .csv file and then create time series chart with MS excel

Save your output in Z (share drive)

- #1. Creating directory with your name
- #2. Save your output in MS power point and put in the directory
- #3. Copy photo taken during the course if you can share them with friends

Some remarks

- Use of lecture presentation materials
 - Only limited to internal use for your reference
 - Don't use them without permission of lecturers
 - We will upload PDF version of lecture presentations on CEARAC websites after permission of lecturers
- Funded participants (students)
 - Requested to submit short report about the course (1 or 2 pages)
- All participants (students)
 - Requested to submit questionnaires distributed after the course.
- For future collaboration
 - Stay in touch with lectures and friends