

# Introduction of Satellite Data Distribution System

Joji Ishizaka  
Faculty of Fisheries, Nagasaki University



---

---

---

---

---

---

---

---

## Outline

- *NASA Ocean Color Web*  
<http://oceancolor.gsfc.nasa.gov/>
- *NPFC (Northwest Region Environmental Cooperation Center) Marine Environmental Watch*  
<http://www.nowpap3.go.jp/jsw/eng/index.html>
- *JAXA (Japan Aerospace Exploration Agency)*  
[http://kuroshio.eorc.jaxa.jp/AEOS/mod\\_nrt\\_new/index.html](http://kuroshio.eorc.jaxa.jp/AEOS/mod_nrt_new/index.html)
- *IOCCG (International Ocean Colour Coordinating Group)* <http://www.ioccg.org/>
- *CEARAC (The Special Monitoring & Coastal Environmental Assessment Regional Activity Centre)*  
<http://cearac.nowpap.org/>

---

---

---

---

---

---

---

---

## Data Products

(<http://oceancolor.gsfc.nasa.gov/D/OCS/ocformats.html>)

- Level 1 & 2 (LAC, MLAC, GAC)
  - LAC: 1km Local Area Coverage (obtained by local station)
  - MLAC: 1km Merged Local Area Coverage
  - GAC: 4km Global Area Coverage (Stored in Satellite)
- Level 1 (raw Data - need SEADAS for processing)
- Level 2 (Geophysical Data)
- Level 3 (SMI: Standard Mapped Image)
  - 4 (8640x4320) or 9 km (4320x2160)
  - Global Composite (Binned) Mapped Limited Geophysical Data

---

---

---

---

---

---

---

---

## NASA Ocean Color Web (Level 1/2)

- CZCS Sep. 78 - Jun. 86 (MLAC)
- OCTS Nov. 96 - Jun. 97 (GAC)
- SeaWiFS Sep.97 - (GAC)
  - Dec. 04 (LAC around Asia)

(Data obtained within 5 years are restricted to authorized users)

- MODIS/AQUA Jul. 02 - (LAC, SST)
- MODIS/TERRA Jan.07 - (LAC, SST)

---

---

---

---

---

---

---

---

## NASA Ocean Color Web (Level 3)

- GAC (Yearly, Seasonal, monthly, weekly, daily, 3-days)

- CZCS
- OCTS
- SeaWiFS
- MODIS/AQUA
- MODIS/TERRA

---

---

---

---

---

---

---

---

## Ocean Color Web Website

Level 1 & Level 2

Level 3

<http://oceancolor.gsfc.nasa.gov/>

---

---

---

---

---

---

---

---

# Level 1 & Level 2 Browser

1. Choose data set

2. Select sensor and date

3. Click

Find images

Periods for your requested data be displayed

---

---

---

---

---

---

---

---

# Ordering Data for Entire Mission

Order data

---

---

---

---

---

---

---

---

# Ordering Data for Entire Mission

1. Fill in e-mail address

2. Choose if you want NASA to extract location for you or not. Recommend to choose "do". Otherwise data size will be huge.

3. Choose geophysical parameters.

4. Click and follow the instructions.

---

---

---

---

---

---

---

---

## NPEC Marine Environmental Watch

<http://www.nowpap3.go.jp/jsw/eng/index.html>

- NOAA/AVHRR Jan. 02-
- MODIS/AQUA Jun. 02- (processed by JAXA)
- MODIS/TERRA Jan. 07- (processed by JAXA)

---

---

---

---

---

---

---

---

## NPEC Marine Environmental Watch Website

1. Click



---

---

---

---

---

---

---

---

## NPEC Marine Environmental Watch How to order data 1

1. Request your ID and Password



2. Choose data set

3. Select period, cloud coverage and how you want to see the result

---

---

---

---

---

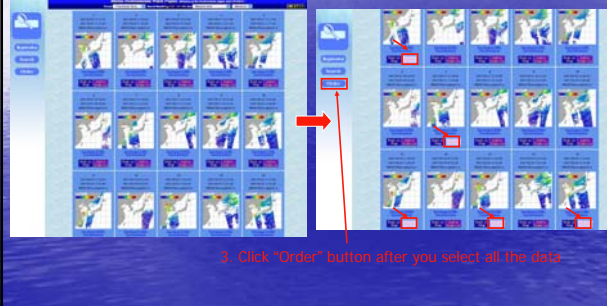
---

---

---

## NPEC Marine Environmental Watch How to order data 2

1. Choose data you want to obtain
2. Click "Add to Order List" button




---

---

---

---

---

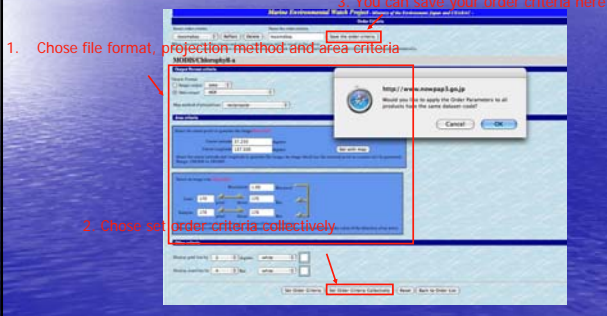
---

---

---

## NPEC Marine Environmental Watch How to order data 3

1. Choose file format, projection method and area criteria
2. Choose all order criteria collectively
3. You can save your order criteria here




---

---

---

---

---

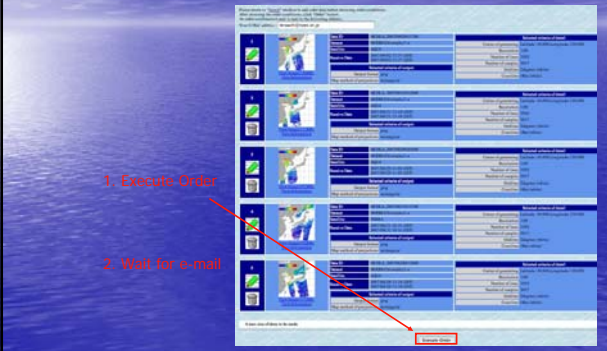
---

---

---

## NPEC Marine Environmental Watch How to order data 4

1. Execute Order
2. Wait for e-mail




---

---

---

---

---

---

---

---

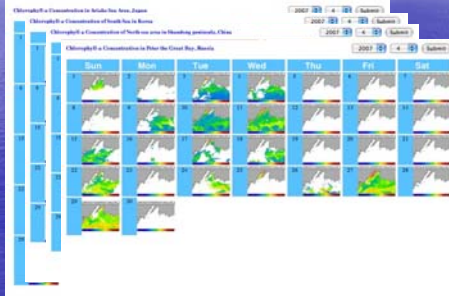
## NPEC Marine Environmental Watch Marine Calendar

Ariake Bay, Japan

South Sea in Korea

North sea area of  
Shandong peninsula,  
China

Peter the Great Bay




---

---

---

---

---

---

---

---

## JAXA MODIS Near Real Time Data

[http://kuroshio.eorc.jaxa.jp/ADEOS/mod\\_nrt\\_new/index.html](http://kuroshio.eorc.jaxa.jp/ADEOS/mod_nrt_new/index.html)




---

---

---

---

---

---

---

---

## IOCCG <http://www.ioccg.org/>

---

---

---

---

---

---

---

---

*CEARAC (The Special Monitoring &  
Coastal Environmental Assessment  
Regional Activity Centre)*  
<http://cearac.nowpap.org/>

---

---

---

---

---

---

---

---