

Background leading to CEARAC activity on assessment of eutrophication status in the NOWPAP region

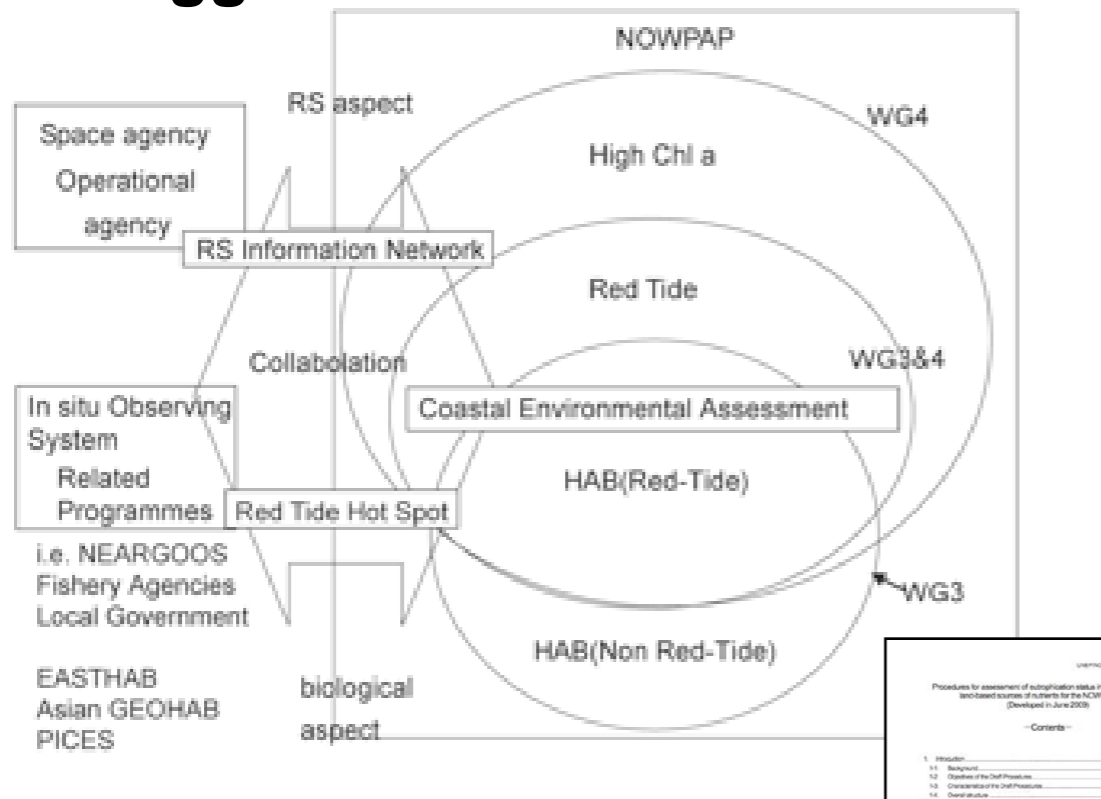
Genki Terauchi

NOWPAP CEARAC

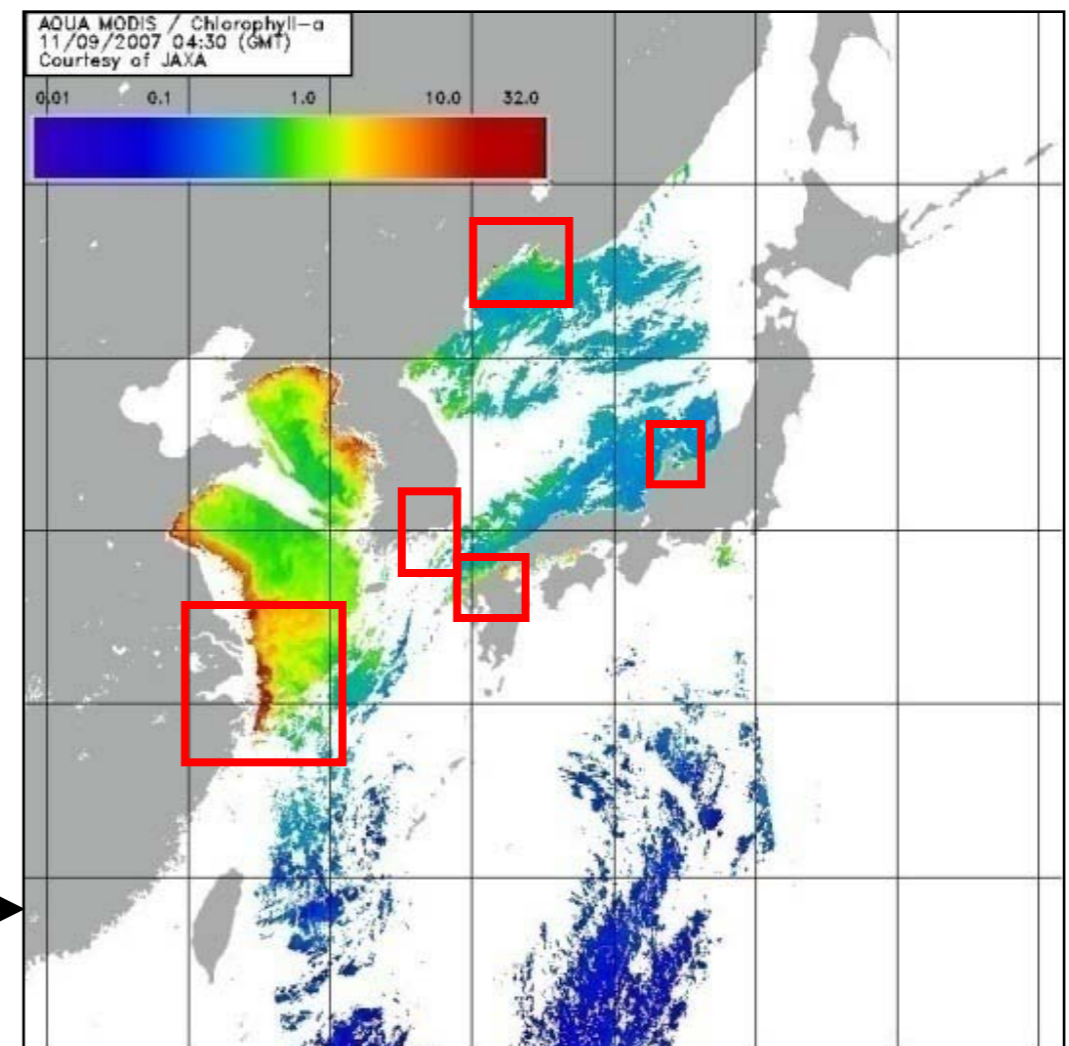
August 4 , 2011

1. Background

Suggestions & Directions



Selected sea areas



Mid- and long term strategies of CEARAC (2007)

UNEP/IOC/CAP/2009/001/Annex 1

Procedures for assessment of eutrophication status including evaluation of land-based sources of nutrients for the NCMI/97 region (Developed in June 2009)

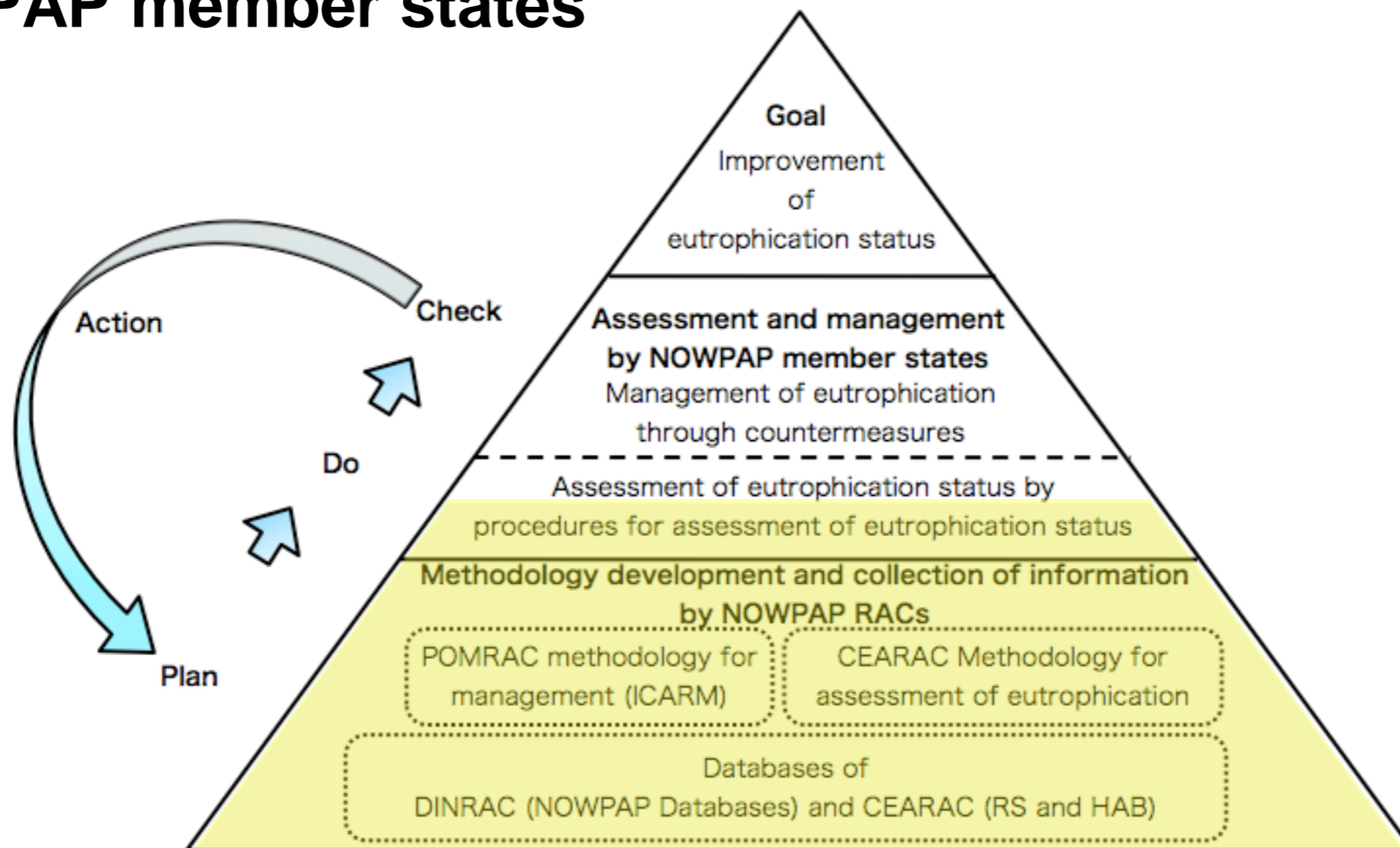
—Contents—

1. Introduction	1
1.1 Background	1
1.2 Objectives of the Draft Procedures	2
1.3 Organization of the Draft Procedures	2
1.4 Overall structure	3
2. Scope of assessment	4
2.1 Scope of assessment region	4
2.2 Selection of assessment units	4
2.3 Selection of assessment parameters	4
2.4 Selection of assessment parameters and data	5
2.4.1 Configuration of land-based sources parameters	5
2.4.2 Selection of assessment parameters of each assessment category	5
2.4.3 Setting of assessment index	7
2.4.4 Selection of monitoring data for the assessment	7
2.5 Choice of assessment time intervals	7
2.6 Setting of assessment periods	7
3. Data processing	7
3.1 Data processing method	7
3.2 Data processing	7
3.3 Selection of monitoring data for the assessment	8
3.4 Data processing	8
4. Setting of assessment criteria	8
4.1 Setting of criteria for selection of assessment parameters	8
4.2 Setting of criteria for classifying the eutrophication status of assessment parameter	8
4.3 Setting of criteria for classifying the assessment category	11
4.4 Setting of criteria for classifying the assessment index score	11
5. Assessment criteria and results	11
6. Assessment results	11
7. Conclusion and recommendation	12

Procedures for assessment of eutrophication status including evaluation of land-based sources of nutrients (Common Procedures, 2009)

2. Objective

- to apply the Common Procedures and to evaluate of suitability of suggested methodology for assessment of eutrophication status in the selected sea areas in the NOWPAP member states



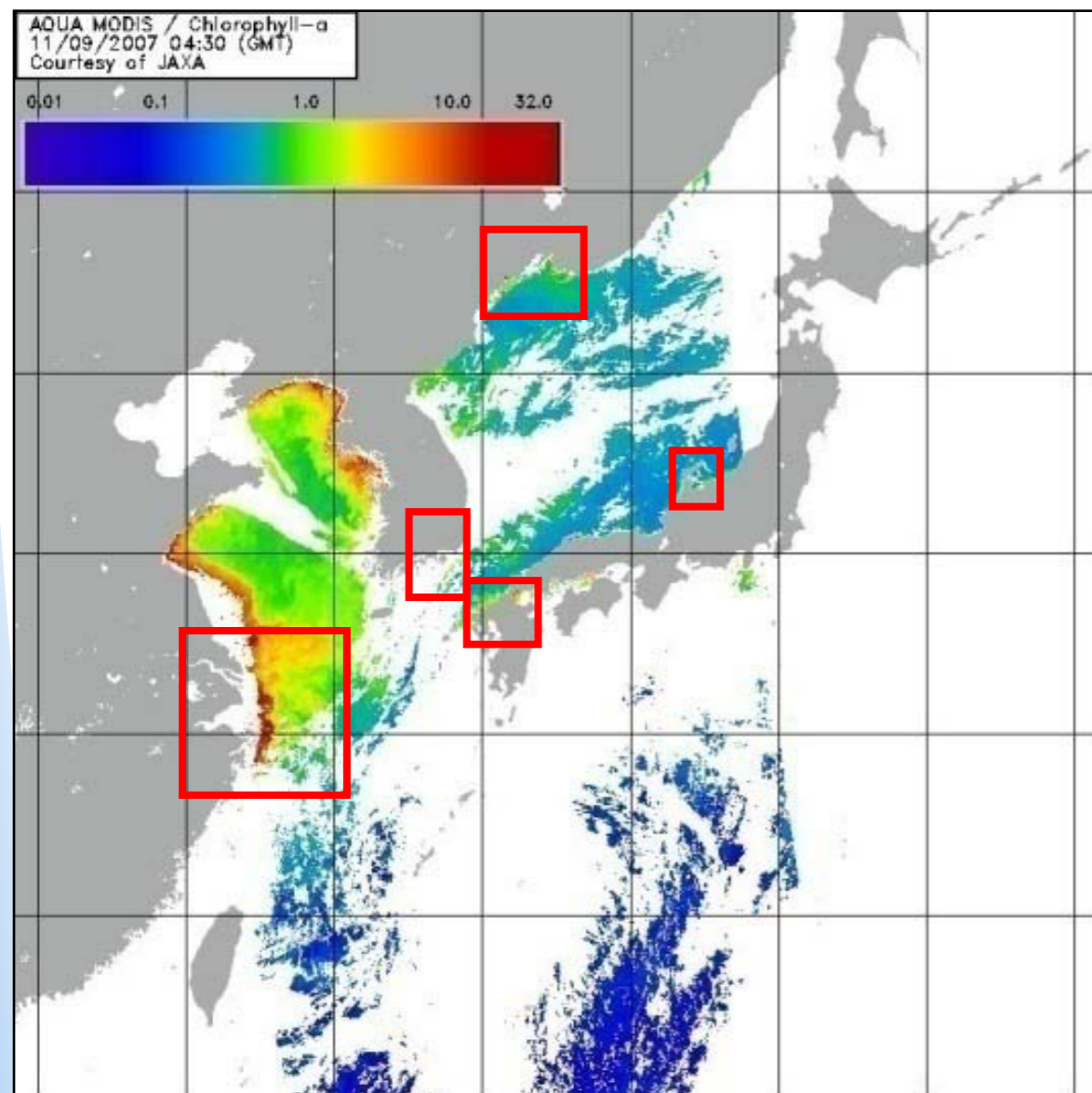
Role of eutrophication assessment by developed NOWPAP Procedures

3. Main tasks

- **Experts nominated by each NOWPAP member state is required to conduct an assessment of the eutrophication status in their selected sea areas based on the Common Procedures.**
- **Main tasks of the nominated experts will be;**
 - ◆ **Division of sub area in each selected area**
 - ◆ **Collection of relevant information**
 - ◆ **Selection of assessment parameter and data**
 - ◆ **Setting of assessment period**
 - ◆ **Data processing**
 - ◆ **Setting of assessment criterias**
 - ◆ **Preparation of a report on assessment results**
 - ◆ **Review of the Integrated report**

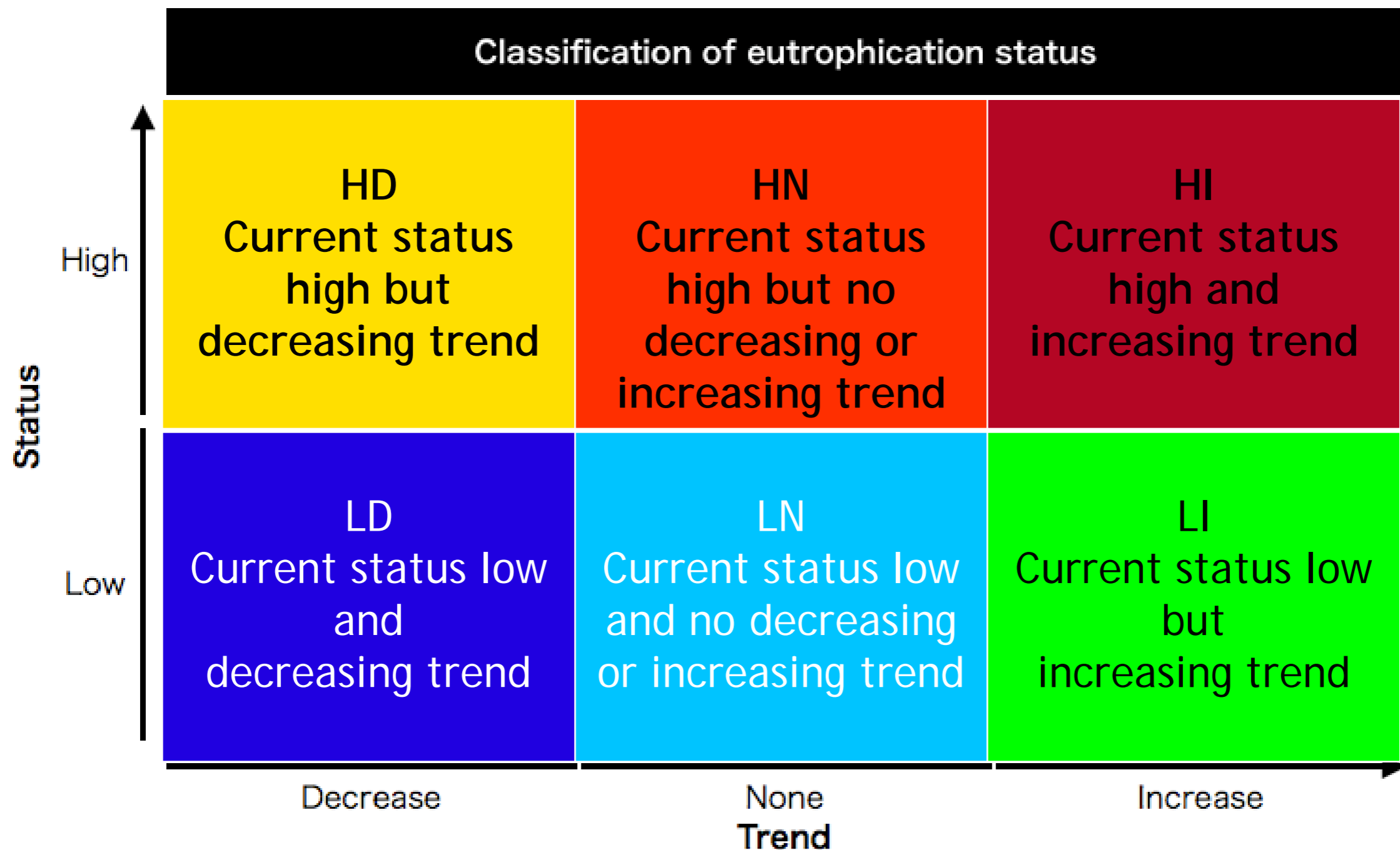
Selected areas and nominated experts

Selection of area for assessment

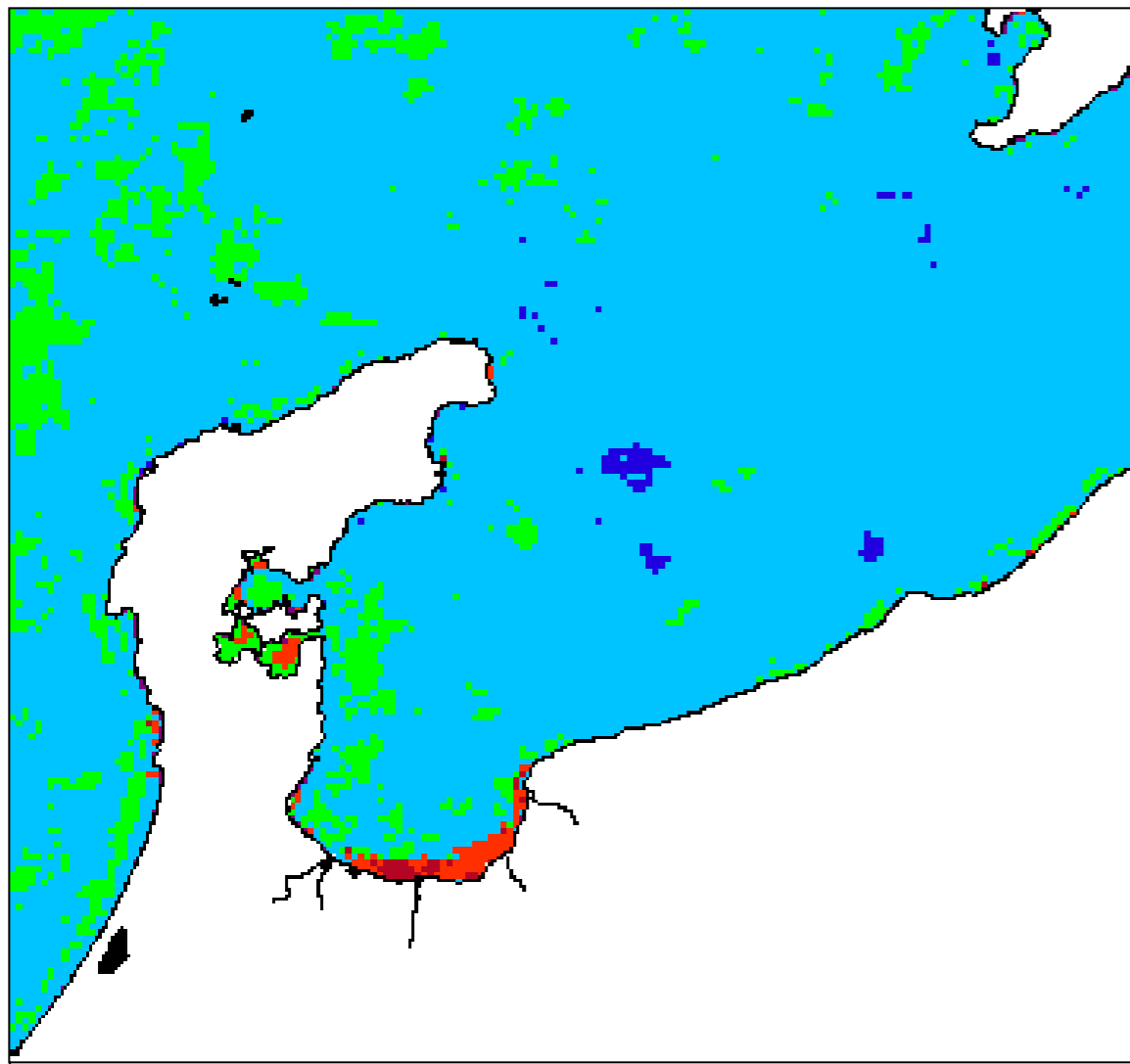


Selected areas	Nominated experts
Yangtze River Estuary and adjacent area, China	Dr. Zhiming YU, Chinese Academy of Science, Institute of Oceanology
Northwest Kyusyu sea area, Japan	NPEC with consultant
Toyama Bay, Japan	
Jinhae Bay, Korea	Dr. Youngtae Park, South-east Sea fisheries Research Institute, NFRDI
Peter the Great Bay, Russia	Dr. Pavel Tishchenko, Hydrochemistry Laboratory, Department of the Ocean Geochemistry and Ecology, POI

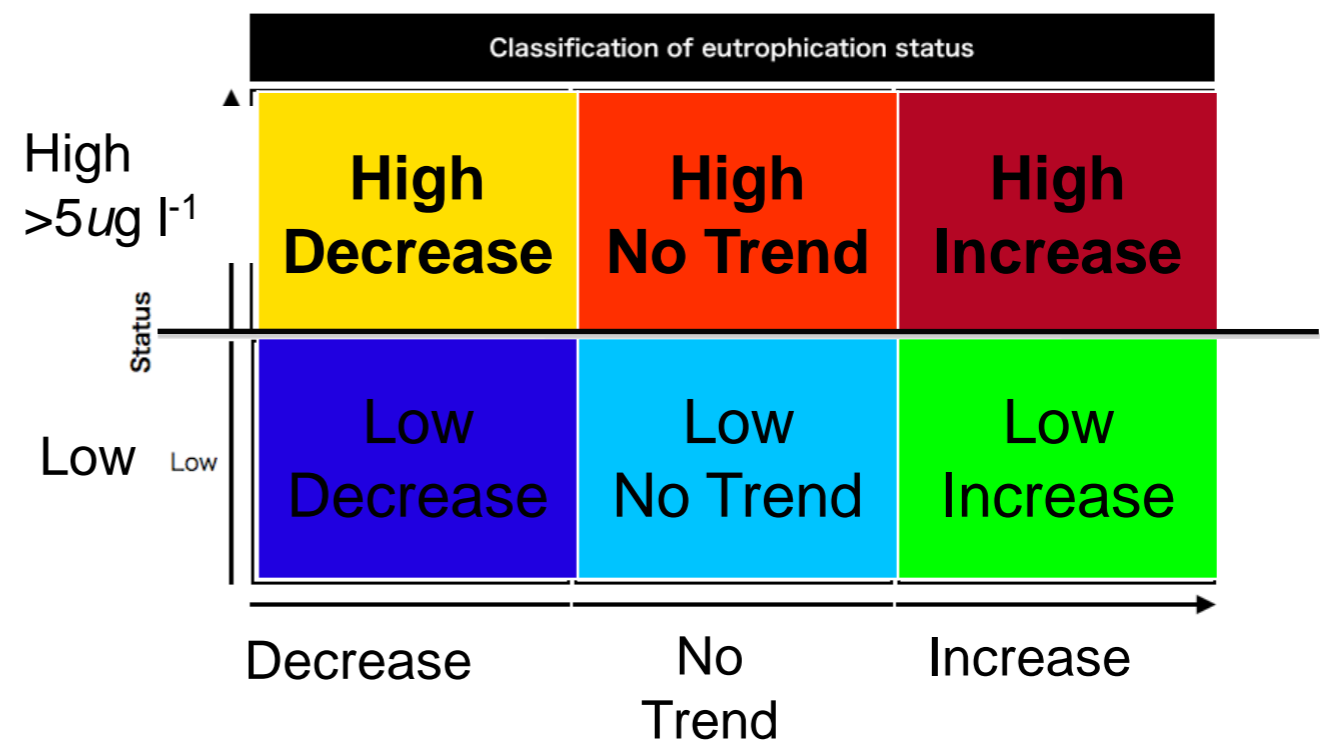
Classification of eutrophication status by the Common Procedures



Preliminary assessment of eutrophication by satellite Chl-*a*



13 years (1997 to 2009)
OCTS -> SeaWiFS -> MODIS (Aqua)
R2009 datasets



Classification based on the Common
Procedures for eutrophication
assessment (NOWPAP CEARAC, 2009)

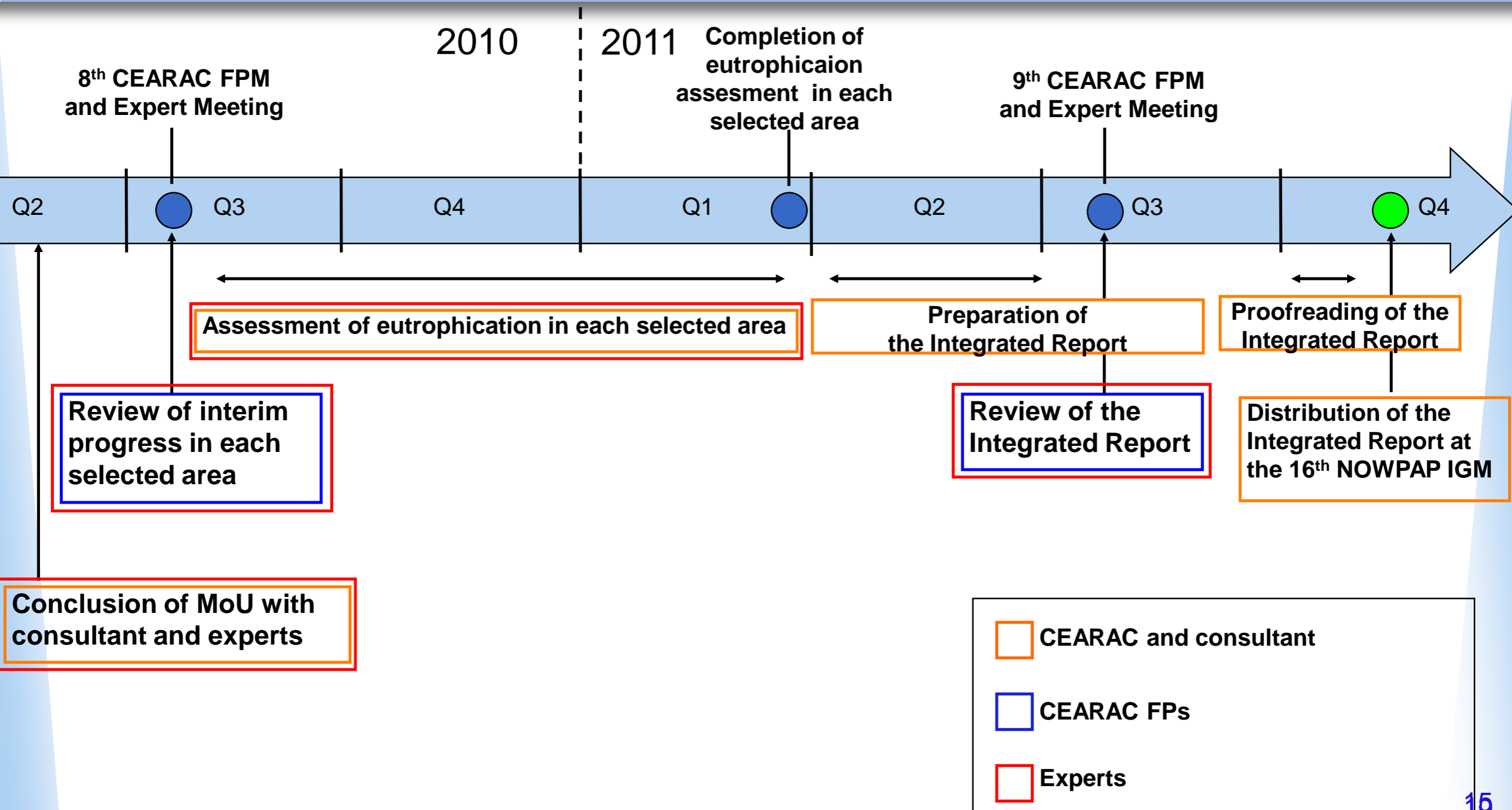
4. Expected outcomes

- **The obtained assessment results from each NOWPAP member state will be compiled as an integrated report on assessment of eutrophication status for the NOWPAP region, hoping that it will provide essential information for proper management of the marine and coastal environment in the NOWPAP region.**

5. Potential partners

- **Sharing obtained assessment results with group or organization dealing with coastal area management**
- **Alliance with NOWPAP RACs, local governments and other relevant organizations is essential**

6. Schedule



7. Budget

Contract	Timing	Output	To be completed	Counterpart	Budget(US\$)
Implementation of eutrophication assessment in each NOWPAP member state	2010 Q2	Results of eutrophication assessment in each NOWPAP member state	2010 Q4	Expert or organization in China	3,000
				Consultant in Japan	3,000
				Expert or organization in Korea	3,000
				Expert or organization in Russia	3,000
Preparation of integrated report on eutrophication assessment for the NOWPAP region	2011 Q1	Integrated report on eutrophication assessment for the NOWPAP region	2011 Q3	Consultant	4,000
Total	10,000				16,000